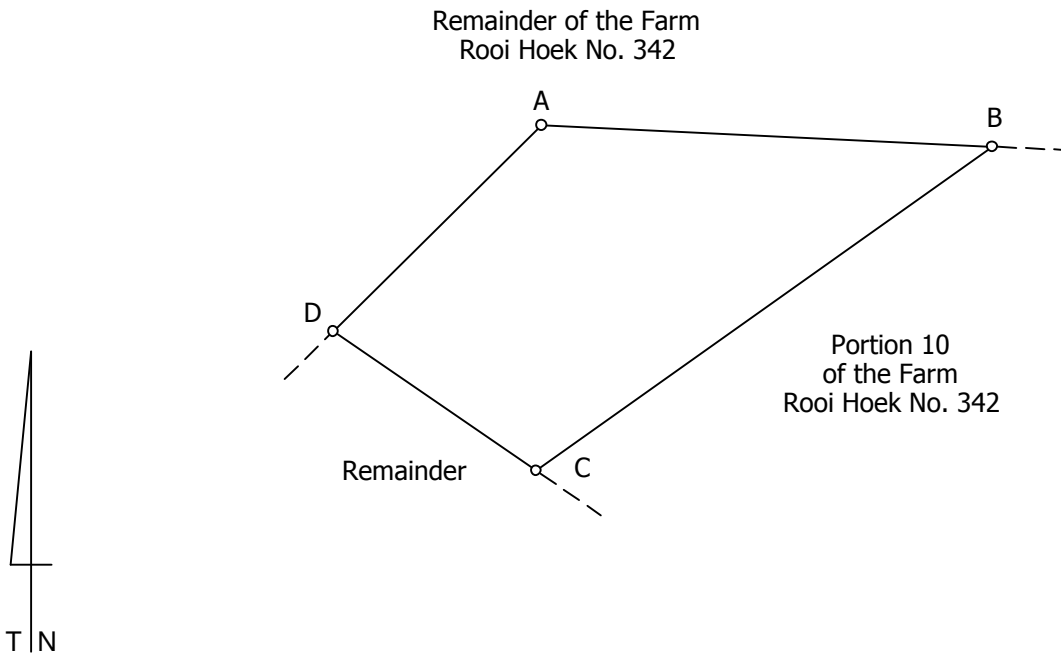


SIDES Metres		ANGLES OF DIRECTION	CO-ORDINATES Y System WG 25° X			S.G. No.
			Constant	0,00	+3 700 000,00	Approved for Surveyor-General
AB	298,51	272 41 37	A	+11 923,98	+61 433,34	
BC	370,19	54 36 10	B	+11 625,80	+61 447,37	
CD	162,84	124 29 00	C	+11 927,56	+61 661,80	
DA	193,80	225 19 30	D	+12 061,79	+61 569,60	
▲ 289 KABELJOUS ▲ 315 JEFFREYS NORTH				+7 783,17 +5 625,66	+59 215,03 +62 139,90	

BEACON DESCRIPTIONS

A 450mm x 120mm x 420mm Planted Stone
 B, C, D 15mm Iron peg and cairn



Scale 1: 5000

The figure A B C D represents 4,9585 hectares of land, being

PORTION 9 (a portion of Portion 4) OF THE FARM ROOI HOEK No.342

situate in the Kouga Municipality
 Administrative District of Humansdorp
 Province of the Eastern Cape
 Surveyed in September 2022

by me,

R.J. Hemsley (PLS 0258)
 Professional Land Surveyor

This diagram is annexed to No. dated i.f.o. Registrar of Deeds	The original diagram is SG. No. 5328/1956 annexed to Grant No.	File No. S/13587 S.R. No. Comp. BN-8DDC (4285) BN-8D (4281) LPI C0340000
---	---	--